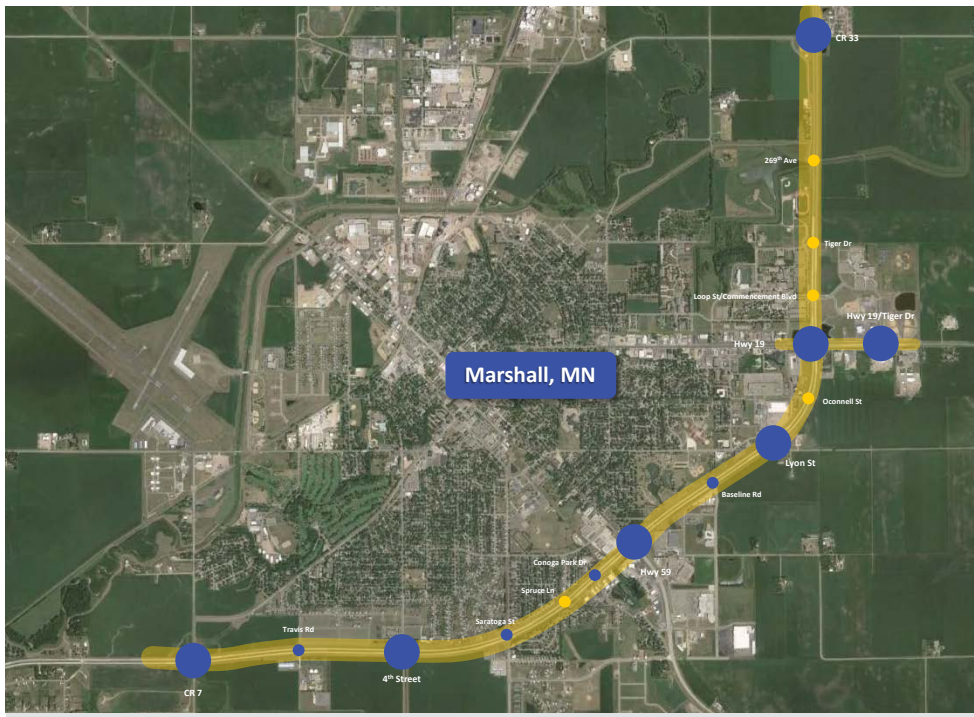


MARSHALL AREA HWY 23

SAFETY ASSESSMENT



About the Assessment

The Minnesota Department of Transportation (MnDOT) and its partners, the City of Marshall, Lyon County, and the Marshall Area Transportation Group, are conducting a safety assessment to evaluate the current and future performance of Highway 23 and develop short- and long-term strategies to manage the corridor now and into the future. The proposed strategies will create a joint vision for the corridor between stakeholders and the public to help identify and prioritize improvements to take advantage of funding as it becomes available.

The safety assessment will review prior crash history along Highway 23, determine the primary factors for the crashes, and propose short- and long-term strategies to improve the safety of the corridor. The assessment includes Highway 23 from County Road 33 to County Road 7. Also included is a segment of Highway 19 from Highway 23 east approximately one-half mile.

This segment of Highway 23 was constructed as a bypass around the urban area of Marshall to allow through traffic to flow with fewer interruptions, to

reduce congestion through town, and in doing so, reduce conflict points for competing uses of highway users. Since construction of the bypass, development has expanded up to and beyond the bypass, creating increased cross traffic along Highway 23.

Schedule

Initial activities for the assessment began in January 2016 and the overall assessment will be completed by August 2016. The assessment will be conducted in three phases:

- **Phase 1:** Identify the purpose and need
- **Phase 2:** Develop and evaluate alternatives
- **Phase 3:** Identify recommended strategies and implementation plan

Website

For more information about the assessment, please visit the assessment website:

<http://www.dot.state.mn.us/d8/projects/hwy23marshallstudy/index.html>

HOW CAN YOU PARTICIPATE IN THE ASSESSMENT?

A comprehensive public involvement process is being conducted to gather input, educate, and gain support for strategies to improve the safety of Highway 23.

Upcoming public outreach opportunities:

Public Open House #1

Date: February 24th, 2016

Time: 4 p.m. - 7 p.m.

Location: Marshall-Lyon County Library
201 C St., Marshall, MN 56258

Visit our booth at the Home Show 2016 on March 5th in Market Street Mall!

CONTACTS

Leif Garnass, PE, PTOE

SRF Consulting Group, Inc.

Phone: 763-452-4725

Email: lgarnass@srfconsulting.com

Lindsey Knutson

MnDOT Project Manager

Phone: 320-214-6333

Email: Lindsey.Knutson@state.mn.us

Ryan Barney

MnDOT Project Manager

Phone: 320-214-6324

Email: Ryan.Barney@state.mn.us

